

GUALALA RIVER WATERSHED



Gualala

Legend

- Hwy_101
- Sonoma County
- Mendocino County
- Watershed Boundary

0 10 20 Miles

Coastal Forest



Modern Logging



Buckeye Creek



Kelly Rd. bridge collapse



Kelly Road Erosion



Buckeye Cr. Clearcut/burn



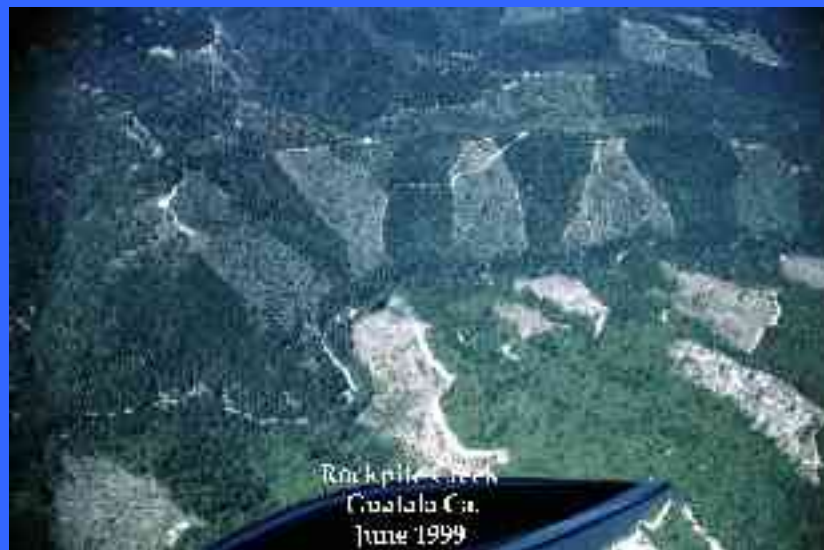
Buckeye Creek Slide



Slide on Buckeye Creek Just below House Ridge, showing highly unstable steep slopes



Rockpile Creek



Main Map



South Fork

Rockpile Creek

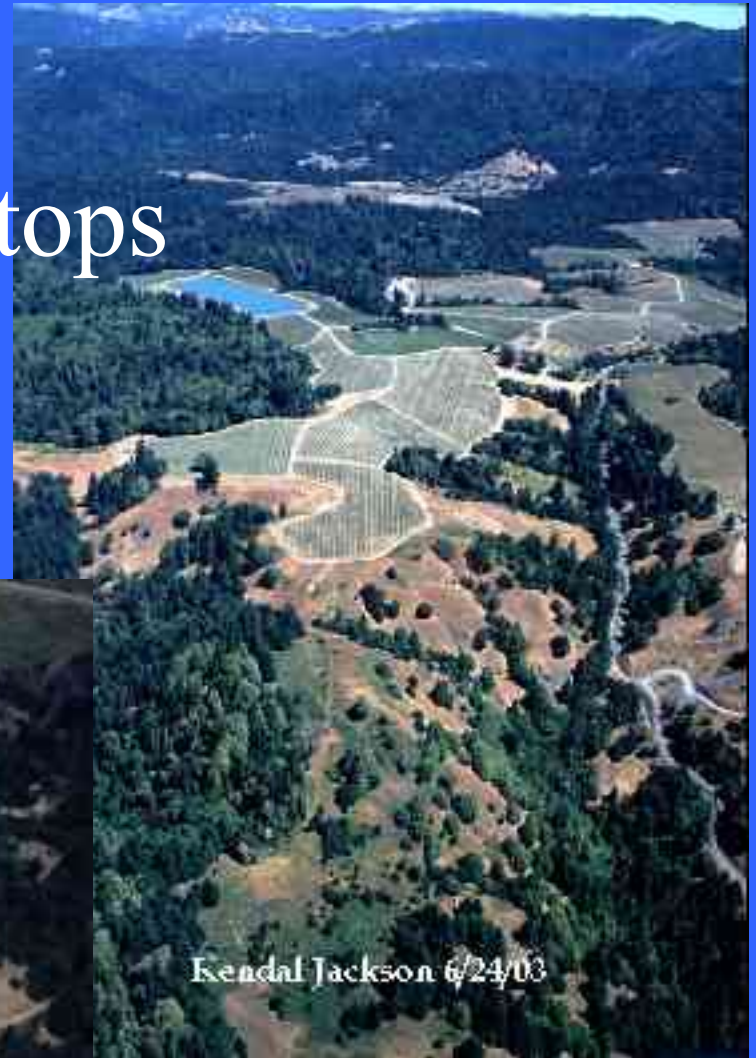


Sea Ranch and Clearcuts



**SEA RANCH
LOOKING EAST**

Planting the Ridgetops

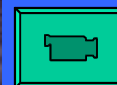


Kendal Jackson 6/24/03

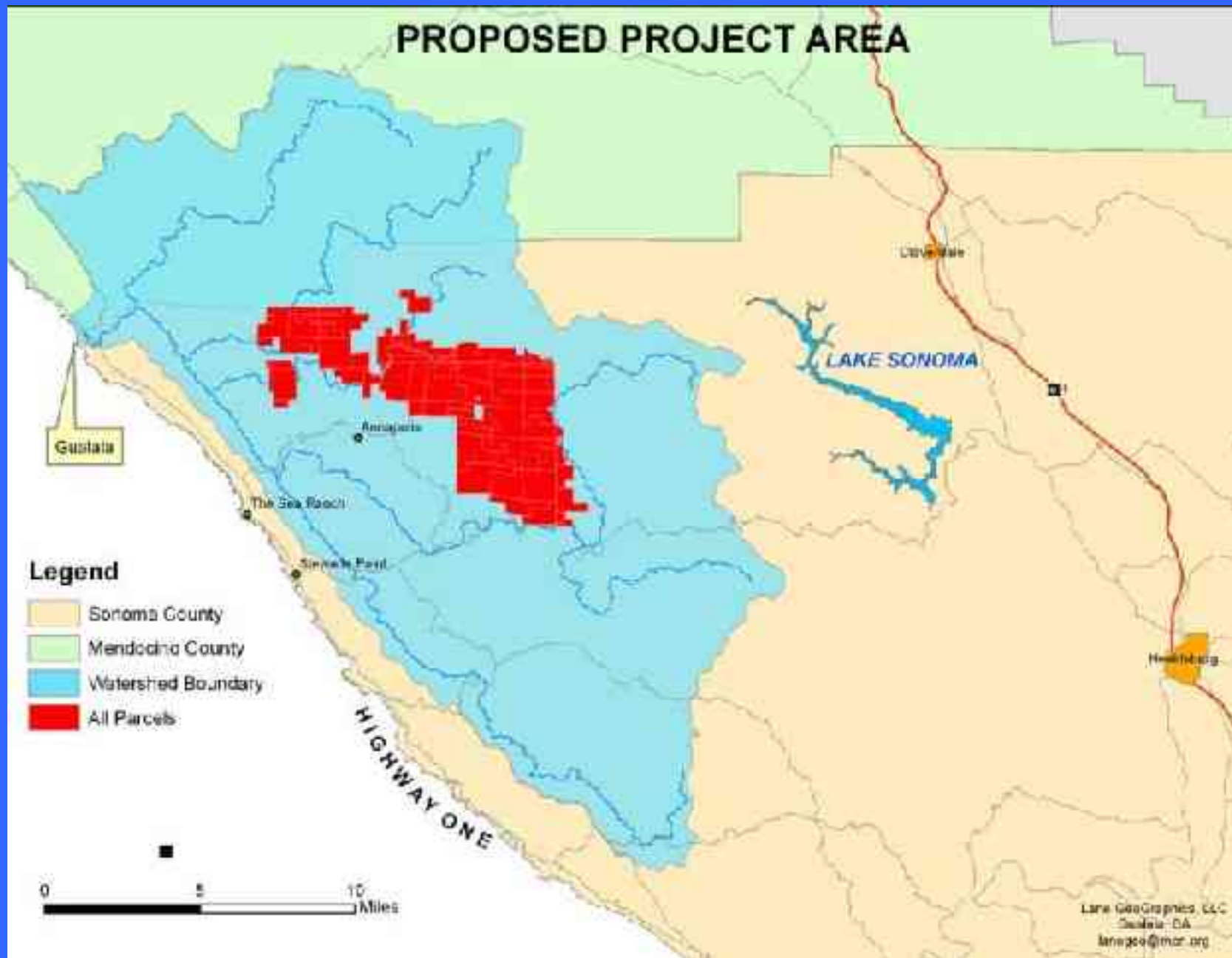


Bryce Jones 6/24/03

Annapolis Vineyards



PROPOSED PROJECT AREA



Legend

- Sonoma County
- Mendocino County
- Watershed Boundary
- All Parcels

Premier Pacific Vineyard Project



School Ridge



Buckeye Creek Slide

Main Map



Bear Ridge



- **Bear Ridge with Hoover Ridge in foreground**



Hoover Ridge



Evans Ridge

June 2005



Main Map



Evans Ridge June 7, 2005



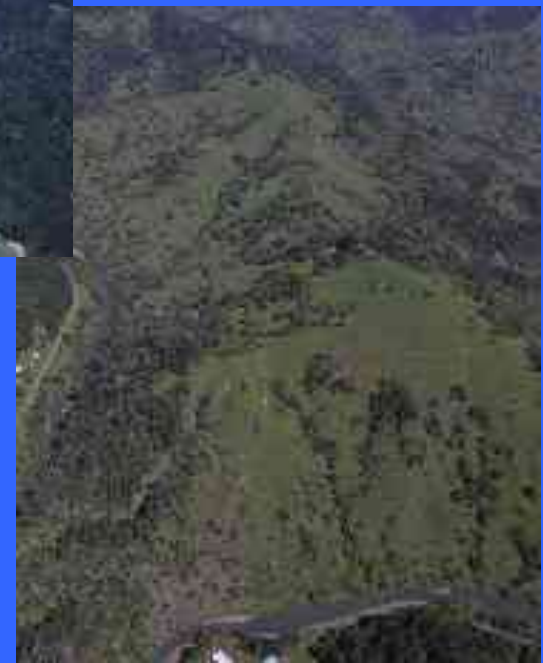
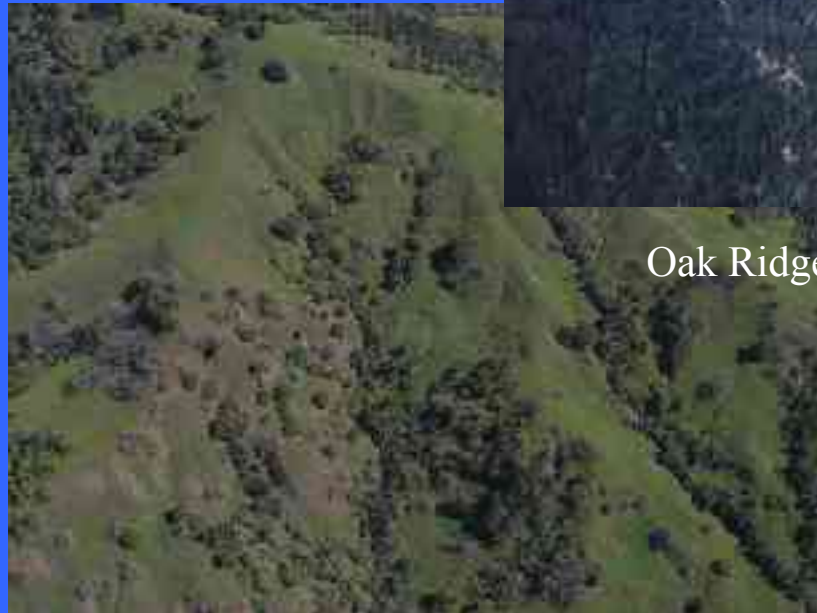
Evans Ridge 6/7/05



Oak Ridge



Oak Ridge Clearcut 1999



Main Map

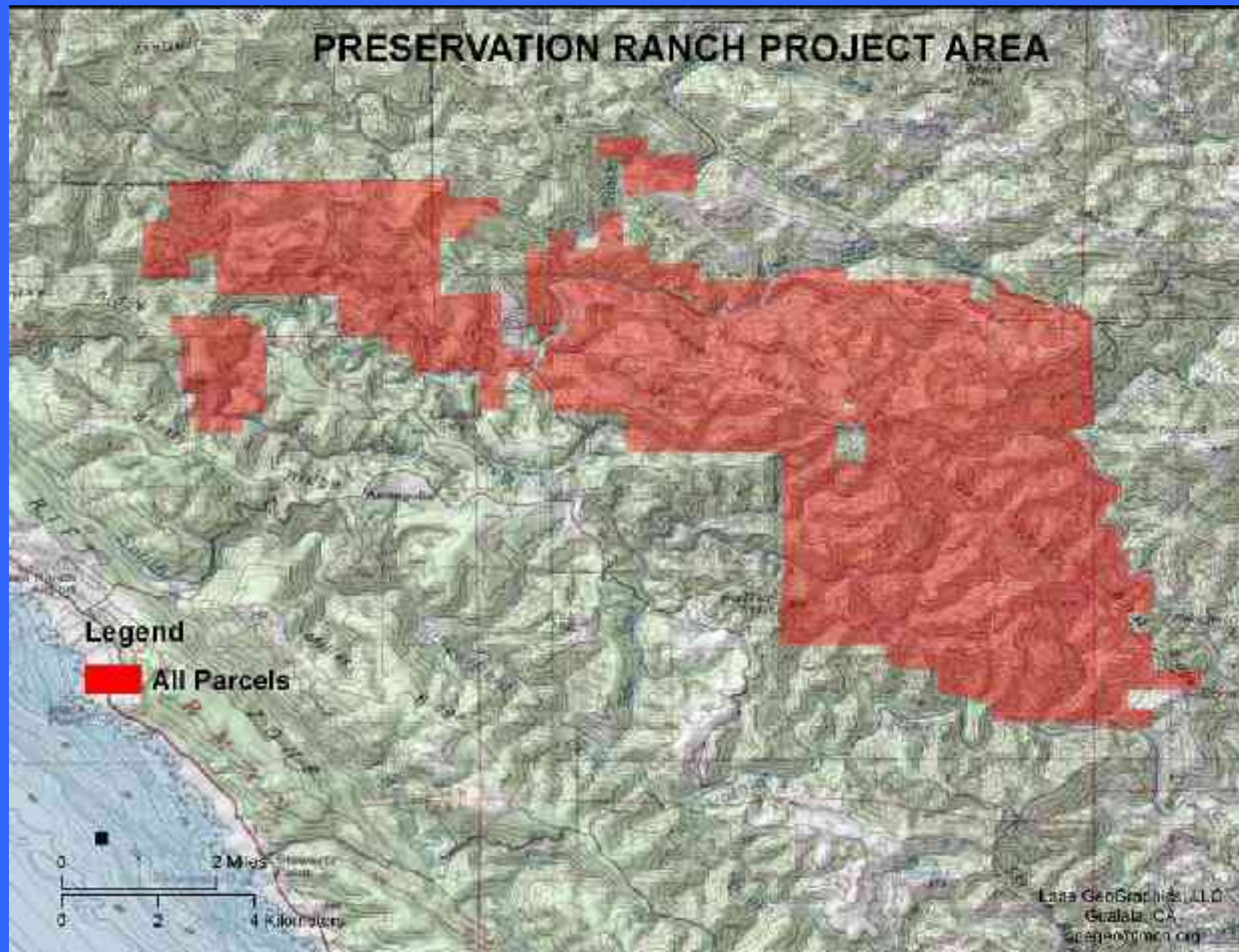
Vineyard on Skaggs Springs Road



Main Map

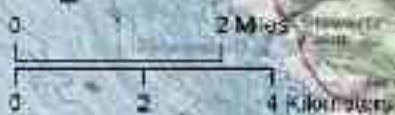


PRESERVATION RANCH PROJECT AREA



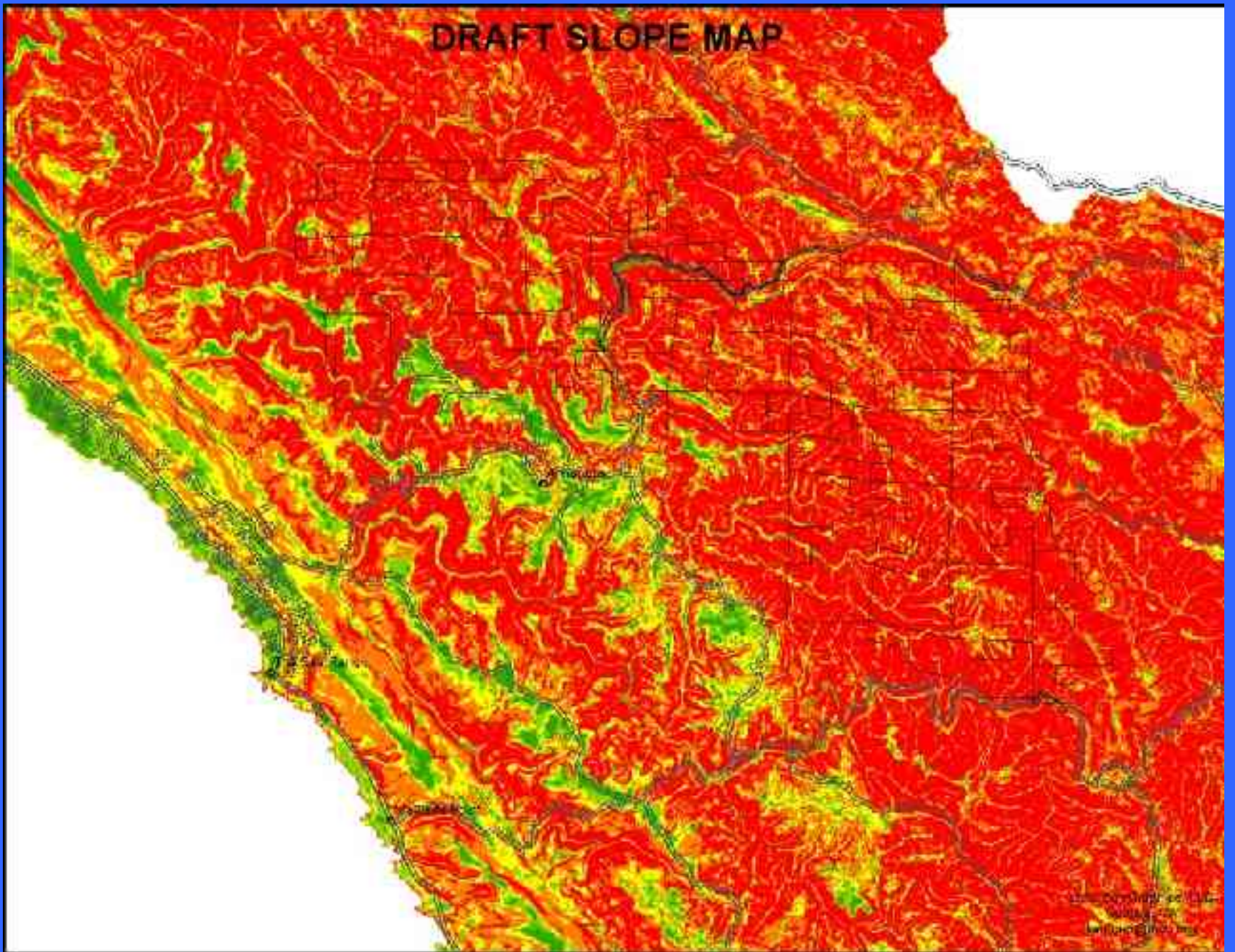
Legend

 All Parcels



Lita GeoGraphics, LLC
Gralata, CA
lita-geographics.com

DRAFT SLOPE MAP



RRD Policies/Goals

- The County General Plan Resource Conservation element contains goals and policies regarding timber resources :

Goal RC-4: Preserve, sustain and restore forestry resources for their economic, conservation, recreation, and open space values.

Goal RC-5: Promote and maintain the County's diverse plant and animal communities and protect biotic resources Sfrom development activities.

Policy RC-5a: Apply the "Resources and Rural Development" land use category where it is the County's intent to manage and conserve natural resources, including wildlife and vegetation habitats while allowing a compatible level of residential development.

RC-3h: Require proof of adequate groundwater in Class III and IV water areas. ..Test wells may be required in Class III areas. Deny discretionary applications unless a geologic report establishes that groundwater supplies are adequate and will not be adversely impacted by the cumulative amount of additional development."